

# Foam sculpting a pumpkin



Glue the two halves of the sphere using AP00022 UHU Por Styrofoam adhesive 40g/50ml.



Draw on the segments of the pumpkin, dividing in half, then quarters, then eighths, then sixteenths.



Flatten the sphere on the top by applying gentle pressure.



Using a craft knife cut grooves into the pumpkin following the drawn lines.



Gently sand the grooves to smooth them using a coarse sand paper.



Seal the pumpkin using watered down PVA or Rosco foam coat.



When the dry sand the surface to smooth out the larger imperfections.



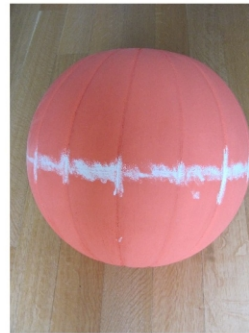
Using a filler fill the joint. When dry sand and then seal.



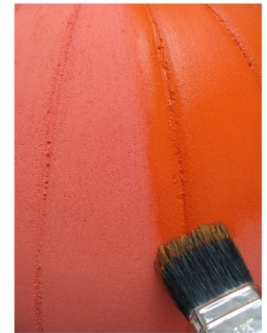
A sanded and sealed pumpkin.



Apply an undercoat to the pumpkin preferably using an emulsion type.



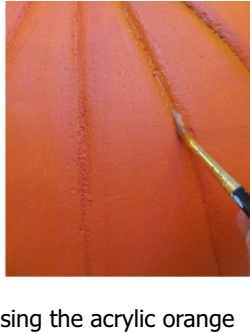
When painted fill any areas that are not smooth then sand, seal and paint.



Apply a coat of Acrylic paint to give solid satin finish.



The pumpkin painted with acrylic paint.



Using the acrylic orange darken with a small amount of black paint in shading into the grooves



A shaded pumpkin.



Dress the pumpkin with a stalk, leaves and tendrils.